

Downtown Arts Center
Tech Packet

General Information

Box Office: 859.425.2550
City Gallery: 859.425.2562
Center Director: 859.425.2349
Technical Director: 859.425.2582
www.LexingtonKY.gov/DAC

| | |
|----------------------|-----------------------------|
| Address: | Hours: |
| Downtown Arts Center | Tues. – Thurs. 10 AM – 6 PM |
| 141 East Main Street | Fri. – Sat. 10 AM – 8 PM |
| Lexington, KY 40507 | Sun. 10 AM – 2 PM |

Owner: Lexington-Fayette Urban County Government

Managed by: Lexington Parks and Recreation

Center Director: Celeste Lewis
clewis2@lexingtonky.gov

Technical Director: Tom Willis
twillis@lexingtonky.gov

Box Office Manager: Ashlyn Swihart
jswihart@lexingtonky.gov



Parking Information

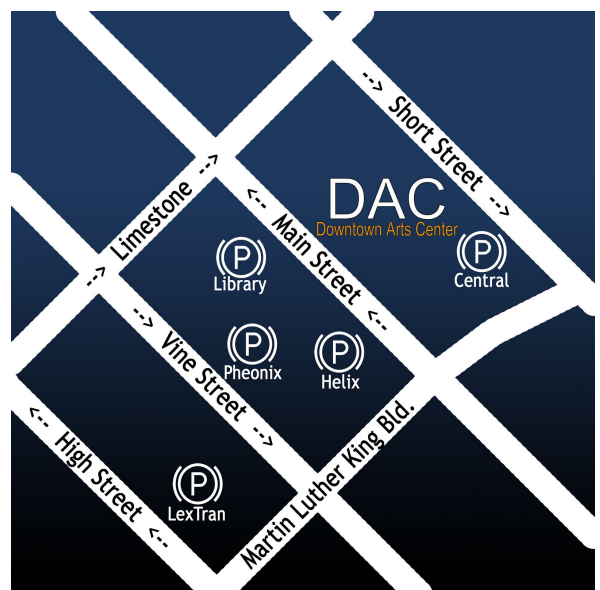
Street parking near the DAC is monitored Monday through Friday 8 am – 5 pm.

Additional parking can be found across the street from the DAC at the Helix Garage, the Library Garage and the Phoenix Surface Lot.

Helix Garage: \$2 hourly, \$8 daily rate, \$3 after 5 pm, \$3 Weekend Rate and free after 7 pm on non-event days.

Library Garage: Validate for first Two hours, \$1 per half hour, \$8 daily rate.

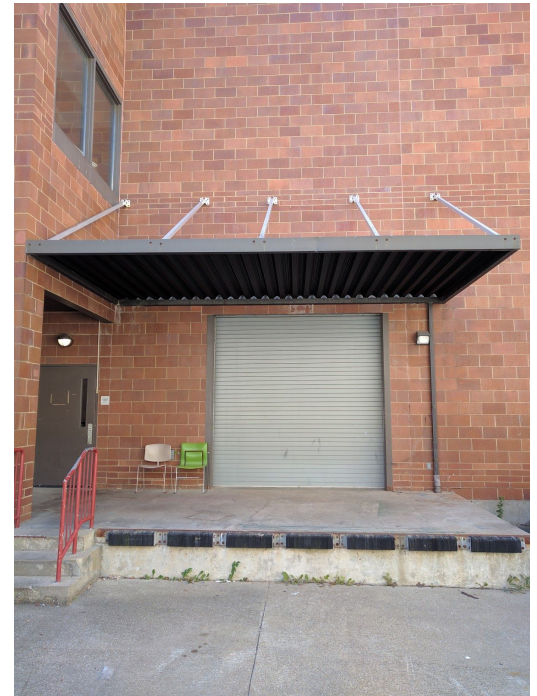
Phoenix Surface Lot: Available Free after 5 pm and on Weekends.



LEXINGTON

Loading

- There is a severe incline approach to the single-bay loading dock, on the right side of the back parking lot (off Short St.).
 - Dock Height: 20.5"
 - Door Size: 9'11"x9'11"
 - Dock ramp: 36"x5'6" (500lb limit)
 - Handtruck: 600lb limit
 - 2@ furniture dollies (1,000 lb limit)
 - Maneuvering can be difficult for large vans and box trucks.
- Please call to arrange load in, and vehicle parking.



Stage

The Black Box Theatre is 53"x 52". The black painted, sprung oak floor cannot be screwed into. Sound baffling is hung around the space and can be adjusted as needed. The lighting grid hangs above the entirety of the room, above a walkable, tension wire grid. Deck to tension wire is 17'4". House lights extend 1'6" below the tension wire grid. See Rep Plot, and Riser Scheme documents for details.

- ** A minimum of 44" must be allowed between installed set pieces and seating for means of egress. Marked emergency exits change depending on riser configuration. Please call with questions, clarification.**

A/V Booth:

The lighting, sound, and projection control booth is located on the mezzanine in the center of the south-west wall of the theatre. The sound proof windows look over the audience risers for a clear view in any audience setup. It is equipped with an audio monitor with the capability for backstage announcements. It is not usual to have the FOH mix position in the theatre. This can be arranged, but depends on riser configuration, and audience capacity.

Dressing Rooms

There are two dressing rooms near backstage (#1 can seat 10, and #2 can seat 8). Each has a bathroom, two sinks, a shower and seats at mirrors. Two rolling costume racks are provided for your convenience. A small green room is located across the hall. Each room has a ceiling mounted stage monitor.



Inventory:

The Downtown Arts Center has the following inventory. Most items are available for use at no extra cost. The DAC TD can help determine what materials are needed/appropriate. For availability, or if you need equipment not in this list, please contact Tom Willis at twillis@lexingtonky.gov.

Sound:

Yamaha 01V Digital Mixing Board (16 channel)

Playback

- Mac Mini loaded with Qlab - Pro Video license only (CD/DVD reader available)
- Sony Minidisk/CD Combo
- 1/8" cable available for laptop/media device

EV SxA100 Self-Powered Speakers (these are hung in different configurations, depending on riser configuration)

EV Sb121a Self-powered Subwoofer (patched to Aux 4, located in corner of room)

Fully integrated backstage monitoring system

Telex SM-1 SoundMate Personal Listening System with 4@ belt packs

16x5 100' snake; patch stations are located throughout the theatre for convenience

3@ Shure SM-58; 2@ Shure SM-57; 2@ Wireless Handheld - ATW-R1100

4@ boom mic stands - 3 music stands

3@ Whirlwind direct boxes

Assorted adapters and cable for sound equipment.

Lighting:

ETC Element 500 (with one monitor); a dedicated wireless network is setup for mobile app control.

26@ Roscoe/ET IPS Dimmer Bars (156 total dimmers, located on the grid)

4@ Roscoe/ET IPS Portable Dimmer Packs (24 total dimmers, can be used anywhere in the theatre)

2@ Roscoe/ET IPS Wall Mount Dimmers (12 total dimmer, all house lights)

ETC Source 4 Ellipsoidal 36° Lighting Instruments - 72

ETC Source 4 Ellipsoidal 26° Lighting Instruments - 16

ETC Source 4 Ellipsoidal 19° Lighting Instruments - 10

Strand 6" Fresnel w. Barn Doors - 24

Gel frames to accompany every fixture listed; 24@ Gobo Frames (size B)



Downtown Arts Center

Tech Packet

Assorted gel stock and jumpers

Intercom:

Headsets can be set up anywhere in the theatre, including the dressing room hallway, and above the lighting grid.

- Telex MS2000 @ Channel Intercom Base Station
- 10@ Telex BP 2 Channel Intercom Belt Packs
- 10@ Telex PH-1 Intercom Headsets

Projection:

Screens:

- 10'x9' (front and rear)
- 12'x5' (front and rear)
- Cyclorama can be used as a full stage projection surface (front only). Maximum width is 30' (with house projector).

Projector: Infocus IN5110

- Zoom Lens - Throw Ratio: 2.9-1.5 Zoom Ratio: 1:1.93
- 4200 Lumens LCD - WUXGA 1920x1200 resolution
- HDMI is primary source (cable provided). Accepts: VGA, BNC, RCA, S-Video, 2 audio ins, one audio out

Source:

- Mac Mini loaded with Qlab - Pro Video license only

Rigging:

Rigging in the theatre depends on load and location.

Various equipment includes:

- 1.5" Schedule 40 pipe (black) - various lengths
- 1" Schedule 40 pipe (black) - 10' lengths as bottom weight
- Rota locks
- Cross clamps
- Swivel cheeseboroughs
- JR Clancy loft blocks



LEXINGTON

Downtown Arts Center

Tech Packet

Soft Goods:

Black Velour Legs: 8@ 8'x12', 6@ 12'x17'

Full Blacks: 4@ 26'x17' (one set is rigged on a traveller system)

Acoustic Blacks: 19@ 12'6"x7'9", 1@ 12'6"x6"8", 1@ 11'x6'4", 1@ 13'x2'8" (normally hung)

Black Borders: 2@ 24'x2' (one is hung in line with traveller)

White Scrim: 1@ 40'x17'

Black Scrim: 1@ 40'x17'

Muslin Cyclorama: 1@ 40'x17'

Miscellaneous:

6@ 6' lightweight rectangular tables

3@ 60" round tables

10@ 30" round tables (30" or 42" height)

1@ wood lectern

6', 8', 12', 22' extension ladders available. **No hydraulic lift available.**

Staging:

3'x8' platforms

3'x6' platforms

3'x4' platforms

1'x4'x8" step unit with handrail

Various angled platforms

* Heights available in 16" increments, up to 64". Availability based on installed riser scheme.

Maximum Occupancies:

| | Theatre | 1st Floor Lobby | 2nd Floor Lobby | Community Gallery | Rehearsal Room |
|-----------------|---------|-----------------|-----------------|-------------------|----------------|
| Tables & Chairs | 180 | 50 | 30 | 60 | 100 |
| Chairs Only | 300 | 40 | 40 | 70 | 150 |
| Standing Room | 350 | 150 | 125 | 100 | 200 |
| Risers | 248 | | | | |



LEXINGTON